

GENERAL SPECIFICATION NOTES:

All TRADE NAMES to be as specified or equal and approved.

**Ridge Capping:**  
AG150 G550 zincalume ridge capping with broad flute closures to suit roof profile

**Roof Covering:**  
Chromadek (10.5) corrugated 0.8mm thick ISQ230, Z275 spelter galvanised steel roof sheeting with chromadek finish to one side and protective primer coating on reverse side, "SKY BLUE COLOUR", fixed to timber purlins (wind-load to be taken into account). Matching chromadek purpose made barge flashing on all gables to detail

Sheets must project minimum of 50mm beyond purlins at eaves. Holes in sheets to be drilled not punched.  
"SASILATION RSA 420" underlay over rafters and under purlins on training tape.Rafters to be spaced at max 760mm c/c resting on 228 x 38mm wall plates.  
HURRICANE CLIPS to be used at eaves overhangs. At all other purlin/truss intersections double wound 2,5mm diameter galvanised wire.  
All exposed roof timber to be painted with 2 coats ABE PROVONITE, before fixing of roof sheets, fascias and bargeboards.  
Roof pitch to be 15 degrees

**CEILING BOARD:**  
4.6mm rhino board ceiling on 38x38mm S.A. pine branderling @ max 400 c/c nailed to underside of 228xx38 timber trusses.

**BARGE BOARD:**  
NUTEC BOARD socketless barge boards

Aluminium H-profile barge board joiners. (Product No 685-187). Drill for and fix with hot-dipped galvanised screws and washers. 76 x 50mm trimmer batten fixed underside of purlin ends for barge board fixing.

**WINDOWS:**  
Hot dipped galvanised " SS Industrial Type " metal windows. No painting required.  
4mm "safety" glazing with steel putty. No painting necessary. Refer to window schedule.

**DOORS:**  
Galvanised Stock Steel Double Rebated door frames (1.2mm thick) for 220mm walls - not painted with 1 pair of 100mm galvanised steel loose-pin hinges welded in position.  
2032 x 813 x 40mm saligna batten doors with SOLID ART 390/313 4 lever mortice lockset and chrome-plated handles.  
All doors to be primed, undercoat and 2 coats - gloss enamel.

**FASCIAS:**  
Medium density fibre-cement fascia boards  
(Product no. 041-202).  
12mm thick x 225mm with aluminium H-profile fascia joiners (Product no. 685-195). Drill for and fix with hot-dip galvanised drive screws and washers.

**Wash Hands Basin (WHB):**  
WB001 - Wall Mounted Wash Hand Basin.

**Industrial Steel Sink:**  
Stainless steel wall industrial sink was made totally of AISI 304 stainless steel, high-quality, highly durable and resistant, hygienic material.

**WALLS:**  
All walls are to comply with "Part K" of the National Building Regulations.

**Face Brick 30-40MPa Fireside Travertine Imperial and, MAIZE TRAVERTINE FBX size 222x 106 x 73mm, bedded and jointed in Class II mortar and pointed with recessed vertical and recessed horizontal joints, suitable for exposure zones 1-2.**  
, walls in stretcher bond with ruled

joins and perpend internally & externally.  
COMMONS to be used where to receive plaster.  
ENGINEERING Bricks below ground level in foundation walls.  
Brickforce to all courses from window head to underside wallplate.  
Galvanised crimp wire wall ties (7 per square metre - laid staggered).  
External face of inner skin to be painted with bitumen paint.  
External sills to be of sloping brick-on-edge roller course, veranda wall sills to have 10 degrees, other wall sills to be 30 degrees.  
Internal sills to be EVERITE NUTEC fibre-cement (Product No. 031-509) complete with fixing lugs and self-tapping screws.  
375 micron embossed damp-proof membrane stepped below all window sills.  
Where plaster is required internally (13 - 16mm thick), plaster is to have 1:3 cement:sand mix.  
Cement plaster to be painted with "WALL N' ALL" emulsion paint. Colour to be approved by the Department.  
Beam filling to underside of roofing sheets.  
Control joints to be provided at second classroom or at every 12m c/c, sealed with 10mm deep Polysulphide Sealant on backing strip and softboard insert.

**VERANDA WALKWAY:**  
100mm thick concrete slab (20Mpa) reinforced with mesh Ref 193 set 25mm below top on 250 microns GUNPLAS USB GREEN waterproofing on 25mm sand bed on fill compacted to MOD AASHTO 95%. Veranda floor to be graded to fall 50mm and cast in panels of 1850 centres. Control Joints at every 7,4m centres. Finish to be wood float non-slip. Control joints sealed with 10mm Polysulphide sealant with backing strip and softboard.

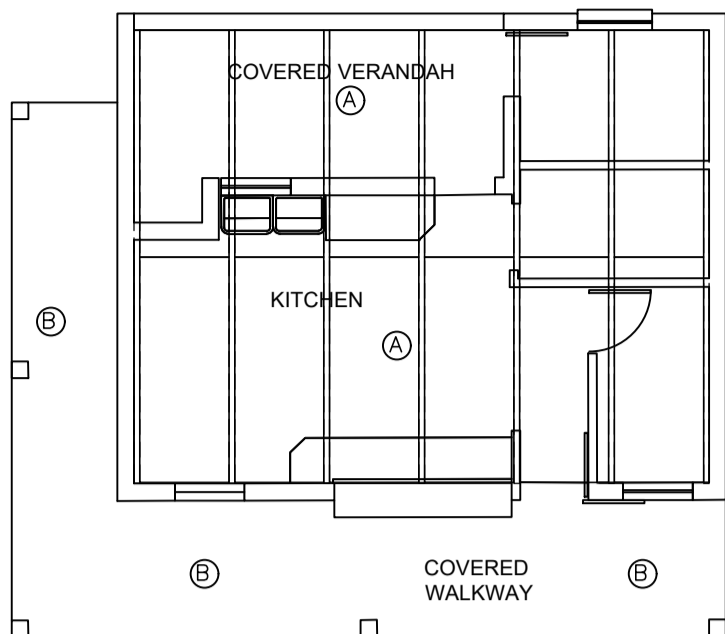
**GUTTERS & DOWNPIPES:**  
Seamless PVC OGEE gutters with baked enamel finish fixed to suppliers specifications, with 100 x75mm fluted PVC downpipes with baked enamel finish fixed as per suppliers detail.

**DRAINAGE**  
Sanitary services to comply with part P of SABS 0400.  
Inspection chambers to be provided to enable inspection of connections below internal surface beds.  
Pipe material and sizes:-  
- sink 50diam uPVC

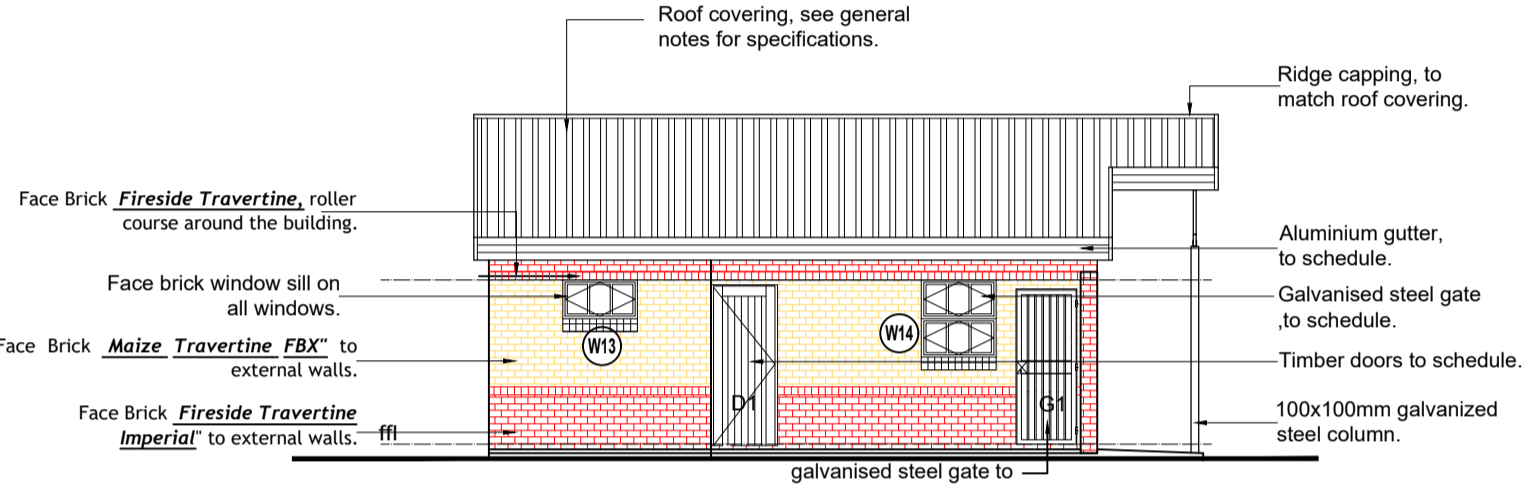
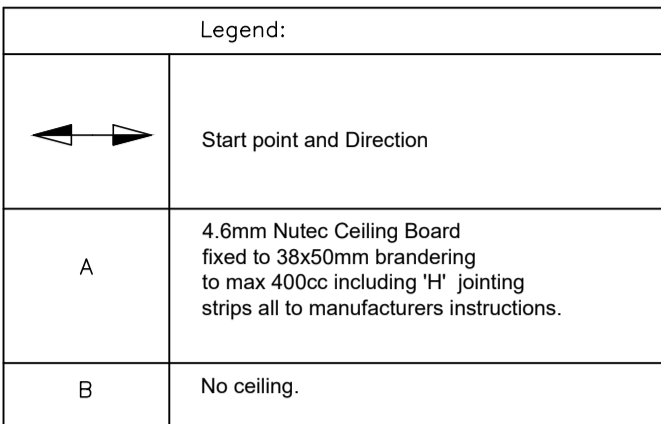
NB: NOTES

- Screeds: general
- Screeds must achieve a SABS level 1 (3mm over 3 m: 1 undulation over this distance with variation less than 1.5mm).
  - Screeds to achieve 20 Mpa reading
  - Screeds to be "wood floated"
  - Apply 3mm self levelling compound of at least 25Mpa's according to manufacturers instruction: suggested product TAL SCREEDMASTER
  - Install 3mm x 30mm brass strip in to screed with epoxy at external doorways to act as a "weather strip"

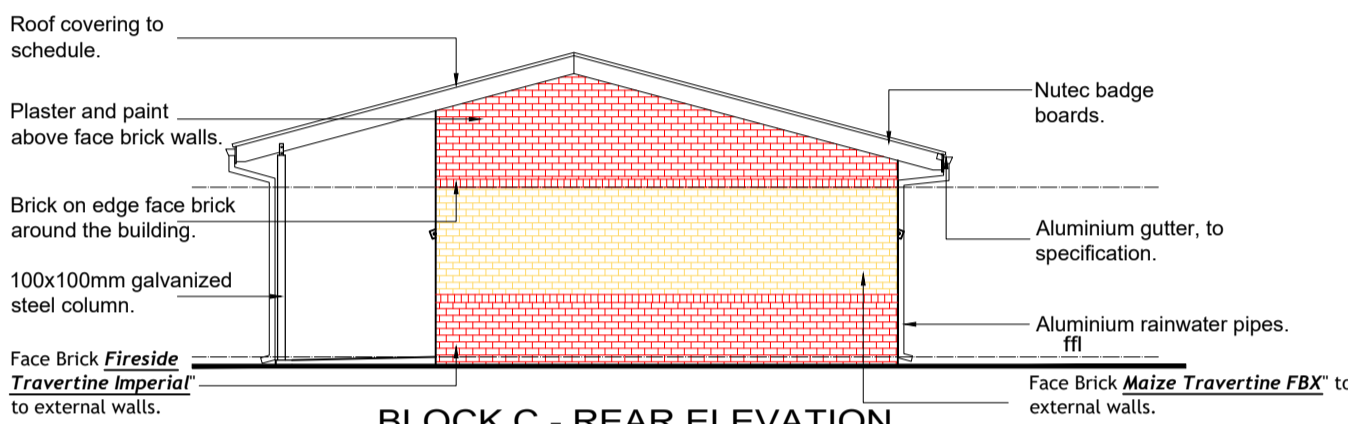
FOR TENDER "ONLY"



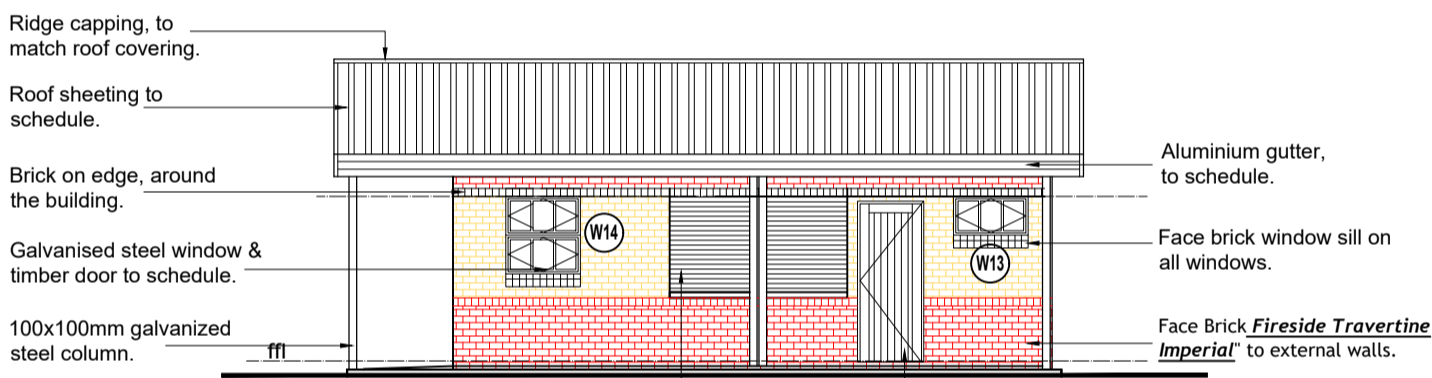
BLOCK C - CEILING LAYOUT.  
SCALE 1:100



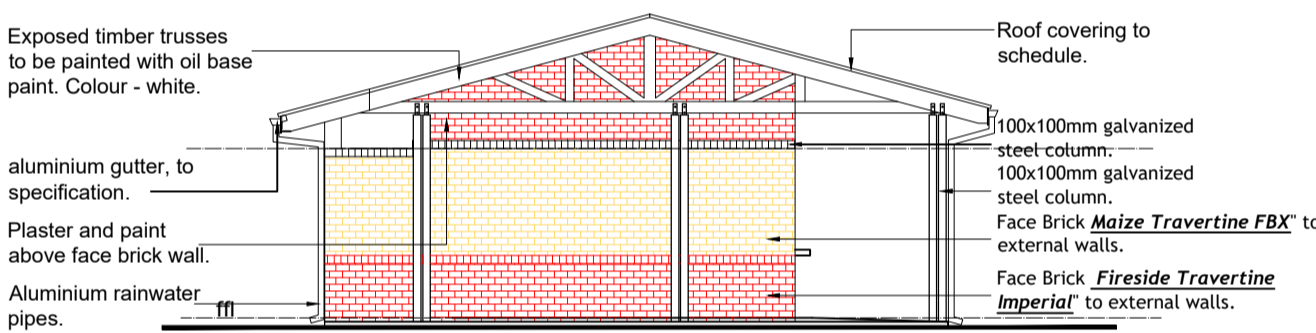
BLOCK C - BACK ELEVATION  
SCALE 1:100



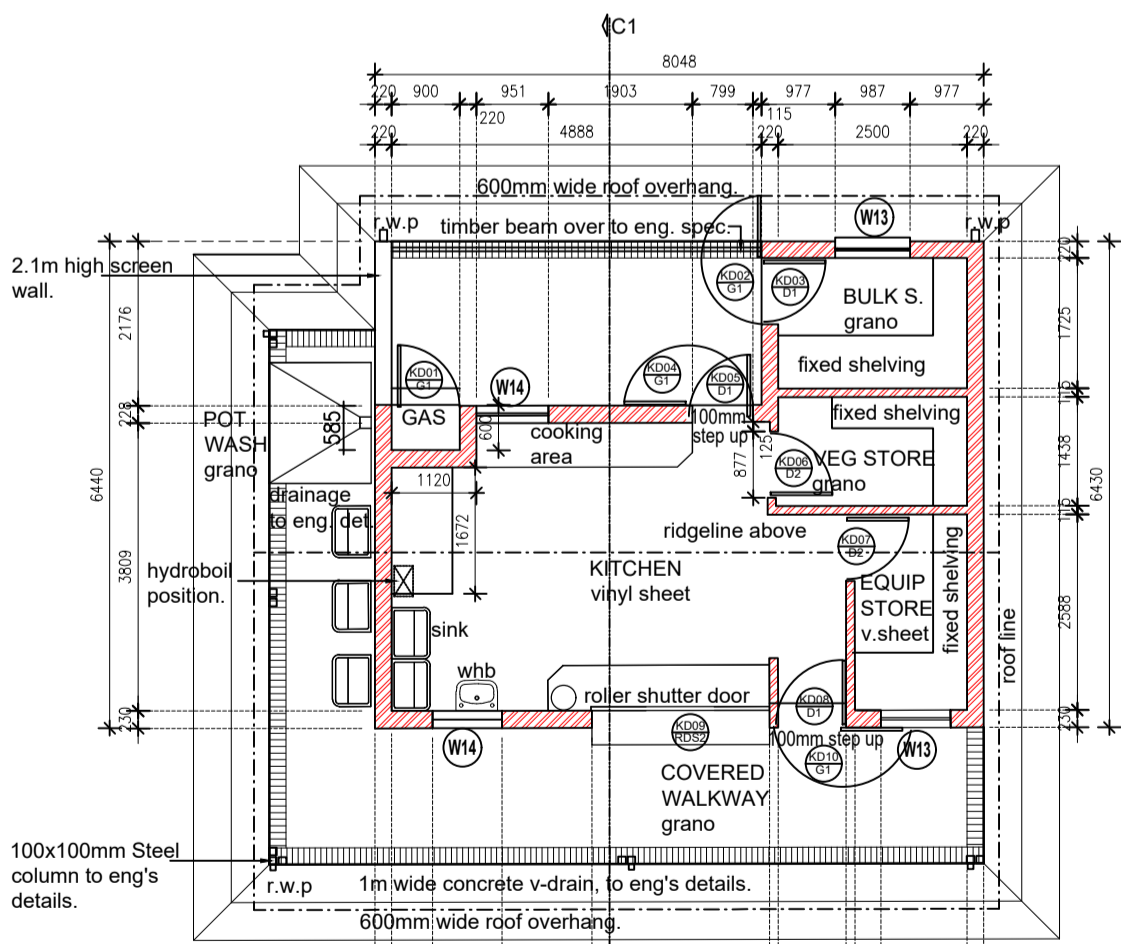
BLOCK C - REAR ELEVATION  
SCALE 1:100



BLOCK C - FRONT ELEVATION  
SCALE 1:100



BLOCK C - REAR LEVATION  
SCALE 1:100



BLOCK C: NSP KITCHEN FLOOR PLAN  
SCALE 1:100

Chromadek (10.5) corrugated 0.8mm thick ISQ230, Z275 spelter galvanised steel roof sheeting with chromadek finish to one side and protective primer coating on reverse side, colour - sky blue, fixed to timber purlins (wind-load to be taken into account). Matching chromadek purpose made barge flashing on all gables to detail

Intermediate purlins at equal centres with ridge and end purlins as per roof manufacturer's spec. (wind-loading to be considered)

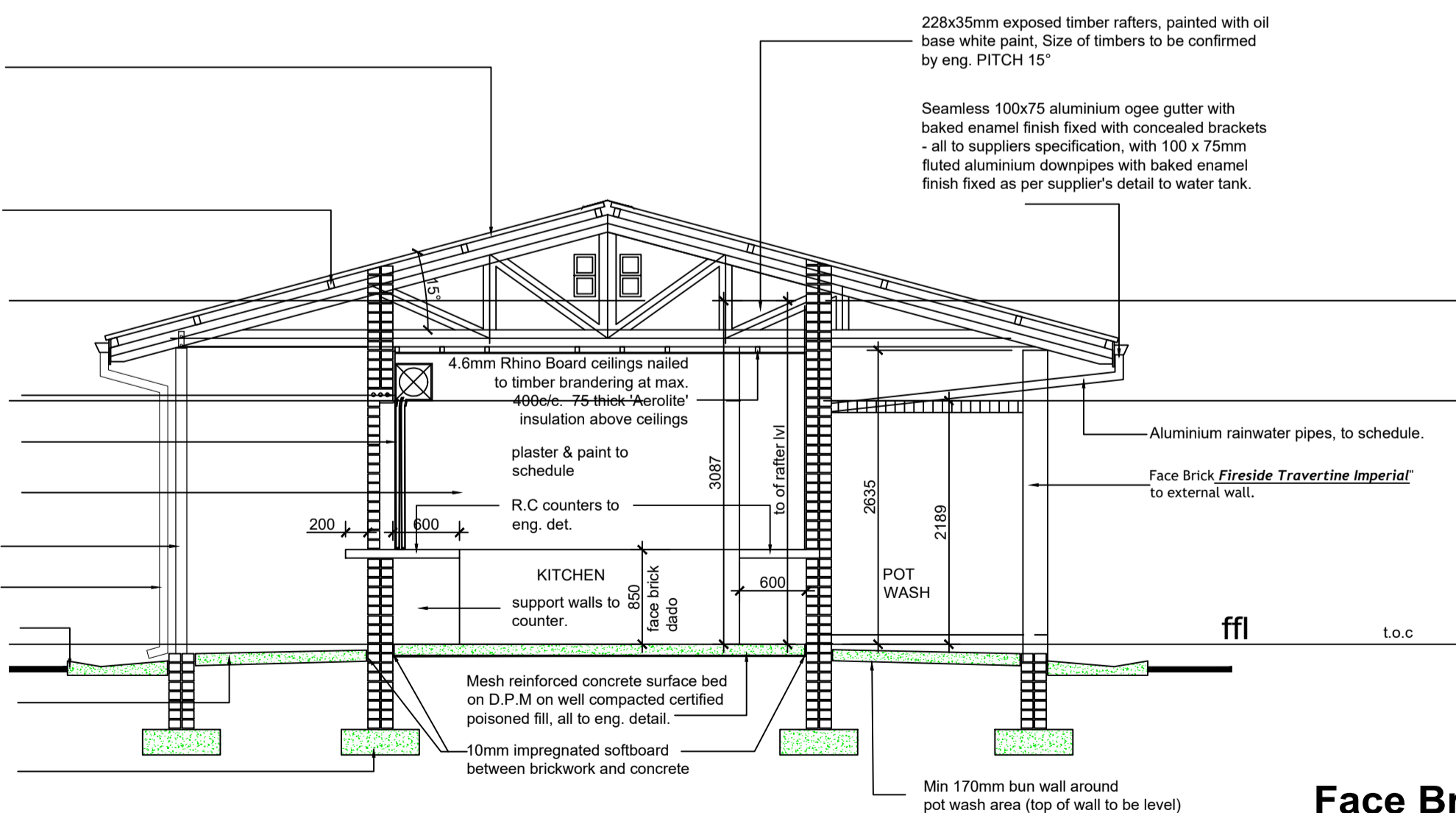
Face brick roller course above all opening.  
Roller shutter door to schedule

Face Brick *Fireside Travertine Imperial* to external wall.  
100x100mm galvanised steel column, to eng's detail.  
100x75mm pvc rainwater pipes.

In-situ concrete water channels to detail

Concrete walkway laid to fall on d.p.m well compacted certified poison fill to eng. detail

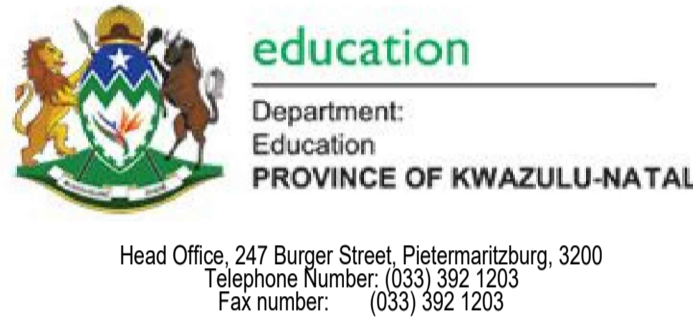
R.C foundations to eng. detail.  
(foundations dependant on soil conditions)



BLOCK C - SECTION D1-D1  
SCALE 1:50

Face Brick  
TRAVERTII  
Class II mortar  
horizontal joints

CLIENT:



IMPLEMENTING AGENT:



PRINCIPAL AGENT:



PROJECT NAME & CLIENT INFORMATION  
KZN-DOE/DBSA - STORM  
DAMAGED PROGRAMME.

SECTION / BLOCK  
EZAKHELENI PS- BLOCK C:  
SNP KITCHEN

TITLE  
GENERAL LAYOUTS &  
DETAILS

DRAWING DESCRIPTION  
PLAN, SECTION, ELEVATIONS,  
GENERAL SPECIFICATIONS and  
CEILING LAYOUTS.

SCALE	AS SHOWN		
DESIGNED NM	DATE AUG. 2022	PrEng No.	SIGN.: 
DRAWN NM	DATE AUG. 2022	SACAP NO.	SIGN.: 
APPROVED NM	DATE AUG. 2022	DRAWN: NM	SIGN.: 
DRAWING NUMBER: KZN.DoE/ DBSA -BPP-EPS-C-L&F-010-0A			REVISION 0A

PREPARED BY:

